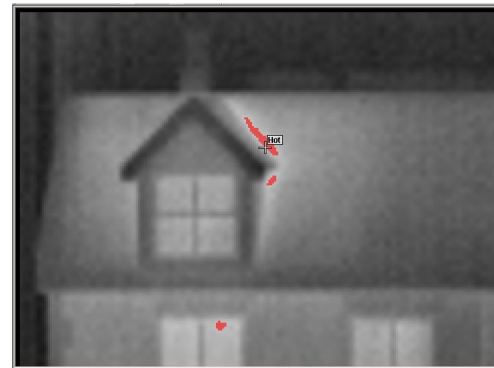
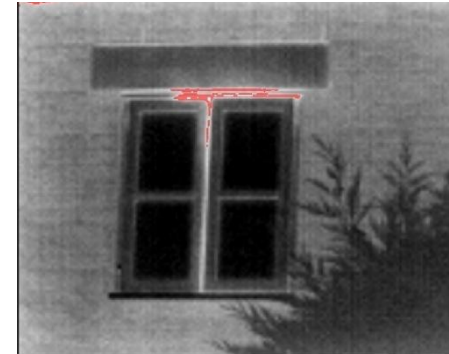
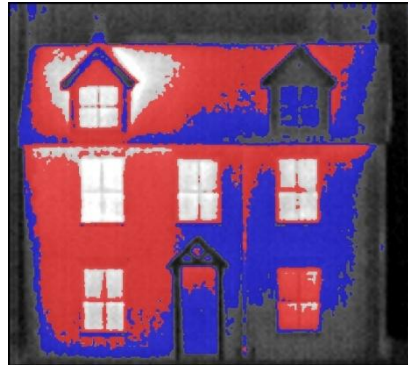


# Thermal Imaging Cameras Designed for Home Inspection



**IRI-4010**

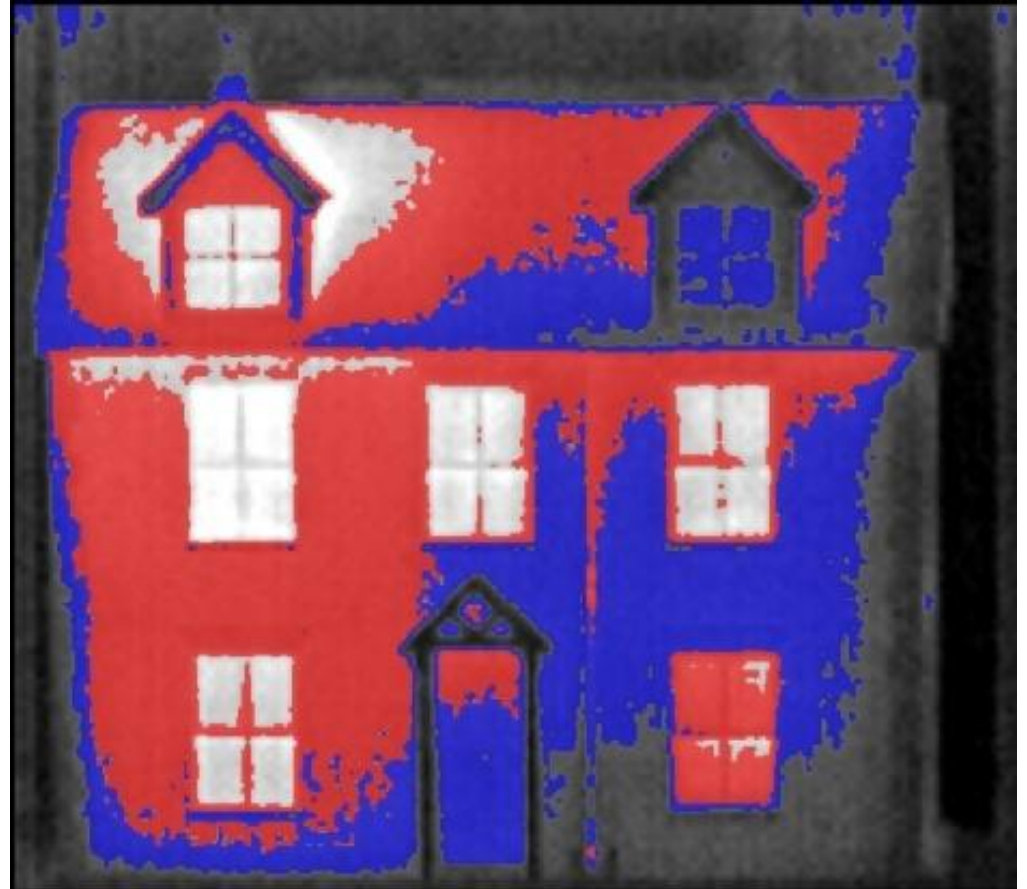


# Key Features of 4010 that Create Value for Your Home Inspection Business



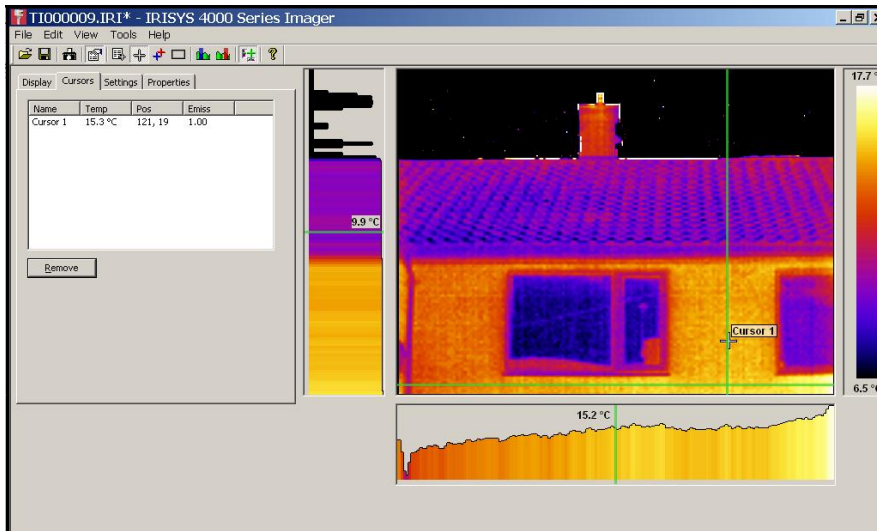
Feature	Benefit for Home Inspection
<b>160 X 120 pixel format infrared image sensor</b>	Superior image resolution means your camera will always meet or exceed required performance for all your inspection work
<b>Factory calibrated cameras with exceptional temperature accuracy and sensitivity</b>	Translates to very accurate inspection data and documentation of issues and defects identified
<b>Target framing mitigates the impact of hot and cold objects near the object you have specifically targeted. Exclusive feature!</b>	Mitigates impact of objects peripheral to your target
<b>Wide standard temperature range (-10C to +250 C) with option to expand range from +200C to +900C. Exclusive Feature!</b>	Wide temperature range supports increases your business opportunities.
<b>Support for large image storage and advanced reporting software</b>	Complete tools to facilitate home inspection reports
<b>Rugged, lightweight, and six hour battery operation</b>	Designed for the rugged world of home inspection
<b>Best price/performance home inspection camera on the market</b>	Why pay more money to our competition for less performance?

# Examples of the 4010 at Work for Home Inspection

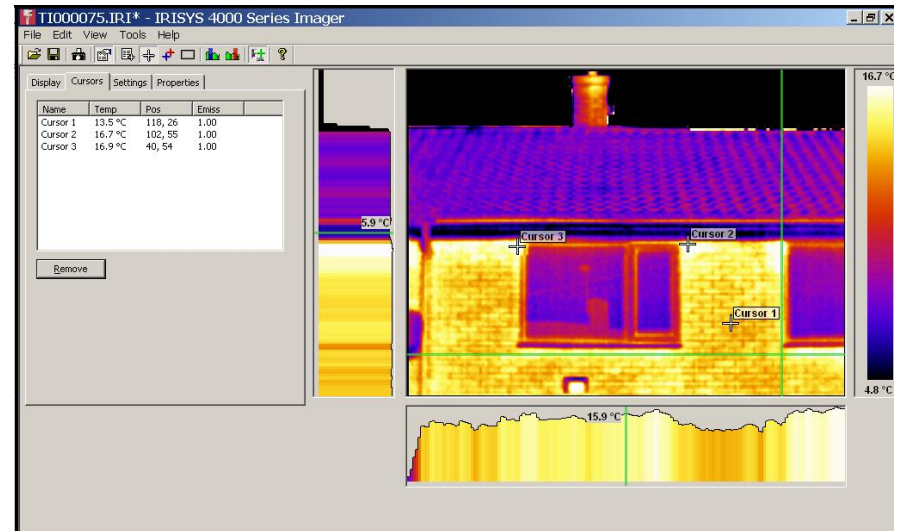


# 4010 Checks Insulation Before and After Work Completed to Reduce Heat Loss

Before

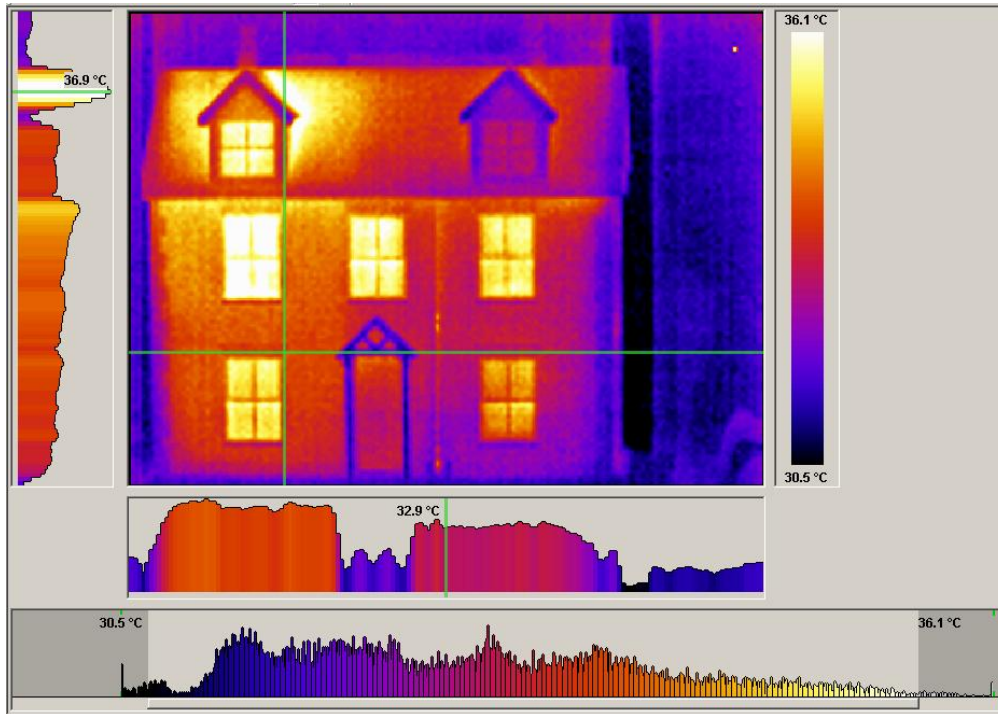


After



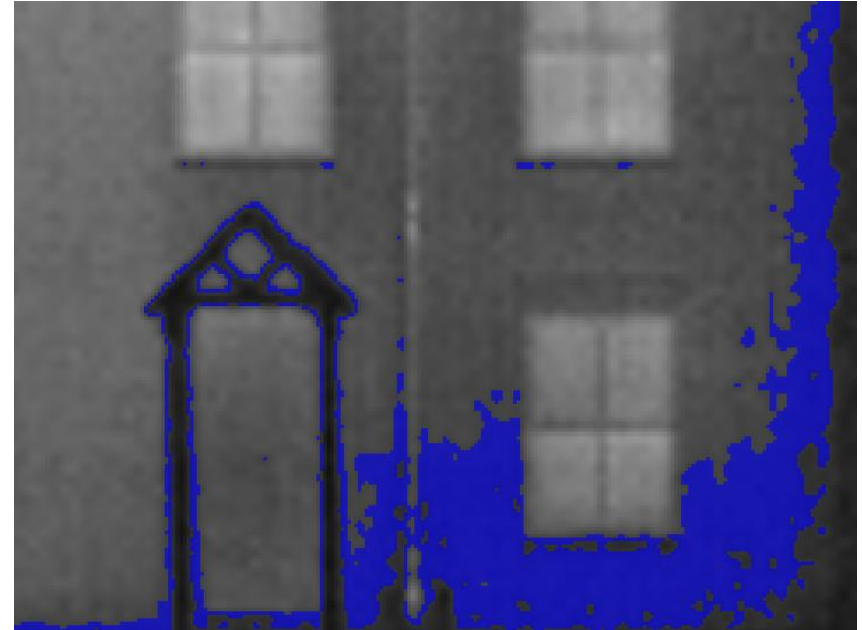
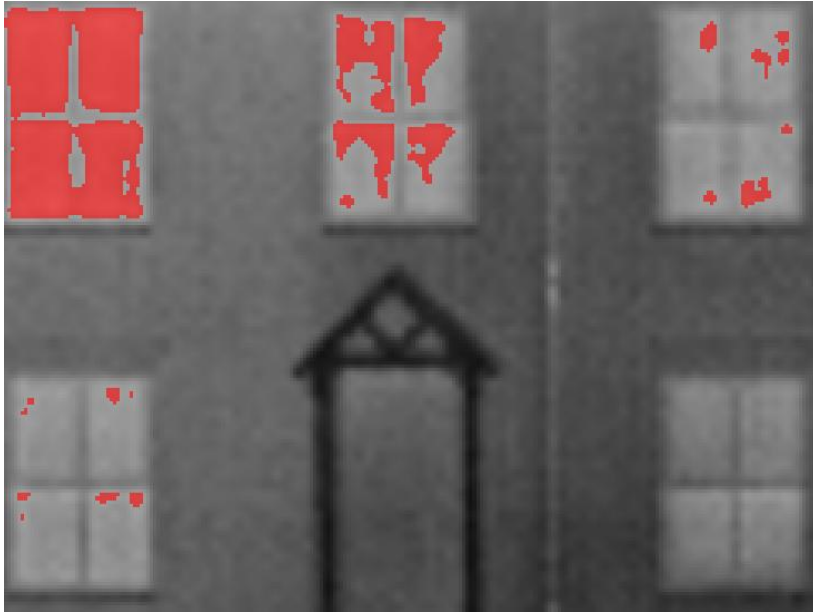
The 4010 was used to measure points on the house before and after insulation improvements were implemented. The “after” measurements shows where heat loss was improved and where there are still issues with improving heat loss. The IRISYS reporting software maps quite well to home inspection analysis and reporting.

# Easy Customization of Your Images for Heat Loss Inspection Reports



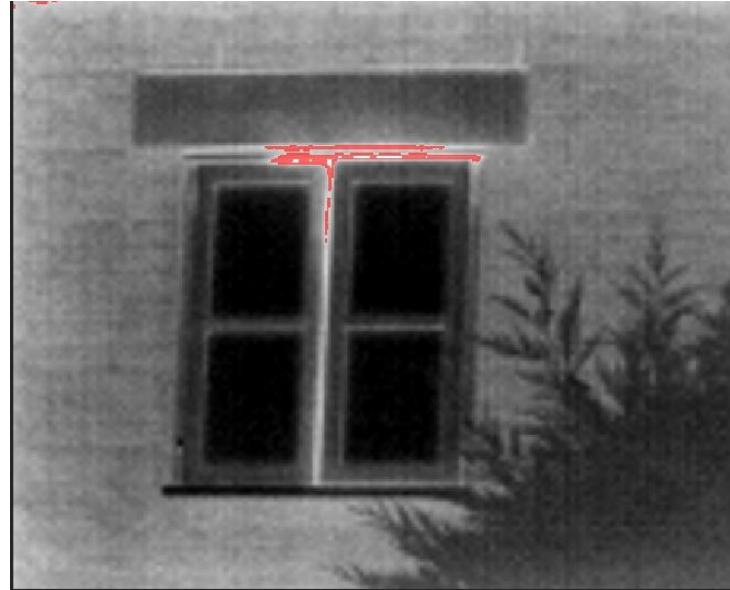
The powerful and easy to use reporting software allows you define your own color coded isotherms. The software provides a complete temperature profile along any cursor line you define in your target and obtain a complete histogram of temperatures.

# Identify Window Heat Loss and Rising Damp



Images captured with the 4010 identify heat loss through windows (left) and rising damp from water (right)

# Defects in Build Quality and Windows



**Abnormal heat loss points to defects in the home structure and windows.**

# 4010 Summary



- The affordable thermal imaging camera for home inspection that exceeds the capabilities of much more expensive alternatives
- Rugged, light weight, long battery life, and very easy to use
- Exclusive features that create additional value for the home inspector including “target framing” and option for extended temperature range
- Powerful image analysis and reporting software that will facilitate the identification and documentation of defects and sources of heat loss
- Priced to sell!